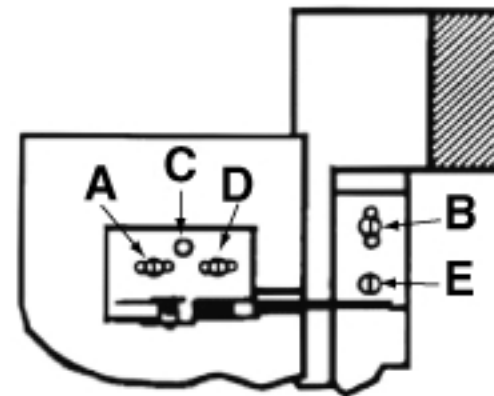


**Use a 6-1/2" dado blade
9/32" wide**



Install hinges on door using screw slot (A) or (D). Install all doors on cabinet using only screw (B) - then adjust all doors for fit. Then install the remaining screw in (E) on the stile and in (C) or the remaining adjustment slot on the door.
(Recommended minimum face frame size is 1-1/2 inches)

Hinge#	Dimension	Dimension
	A	B
#3	1-7/8"	7/16"
#4	1-3/4"	11/16"
#5	1-7/8"	9/16"
#6	1-7/8"	9/16"
#65	1-7/8"	7/16"

**Proper installation requires that all hinge adjustment and set screws be installed!
This hinge has two slotted and one round hole in the door part, use any two.**