

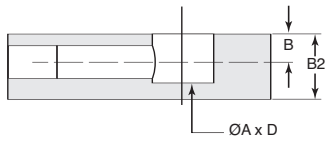
15mm Cam

- 15mm diameter
- Klix locking feature provides a vibration proof joint
- Smooth, easy rotation
- 15mm bit required, see page 652



	B2- Material Thickness	D- Drilling Depth	B
A	1/2" (13mm)	11mm	6mm
B	5/8" (16mm)	12mm	7.5mm
C	3/4" (19mm)	12mm	8.5mm
D	15/16" (23mm)	15.5mm	10.8mm

see below for part numbers



- A** T5653 ZN
- B** T5644 ZN
- C** T5656 ZN
- D** T5657 ZN