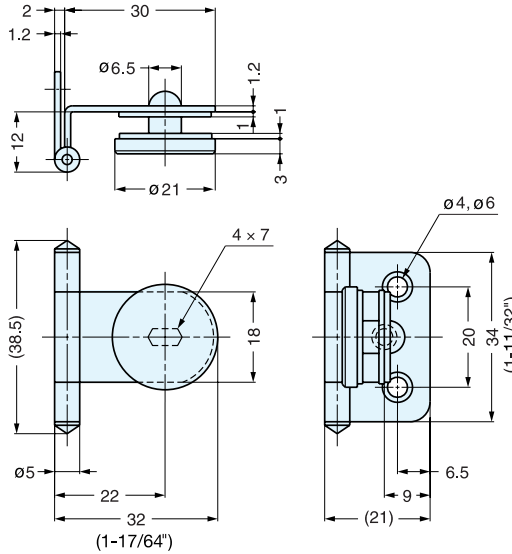


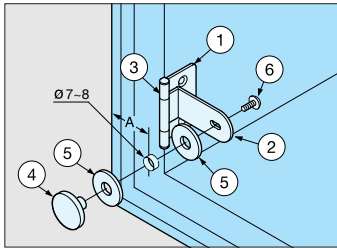
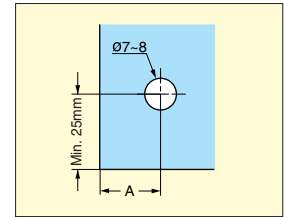
# INSET GLASS DOOR HINGE



# GH-34/0/S



- Hinge for glass/acrylic doors.
- Door thickness: 4-6 mm
- Door size: Max. W450 x H700 (W17-3/4" x H27-9/16")
- Door weight: Max. 4 kg/pair (8.8 lbs/pair)



Installation

Glass Thickness (mm)	A (mm)
4 ( 5/32" )	19
5 ( 3/16" )	18
6 ( 15/64" )	17

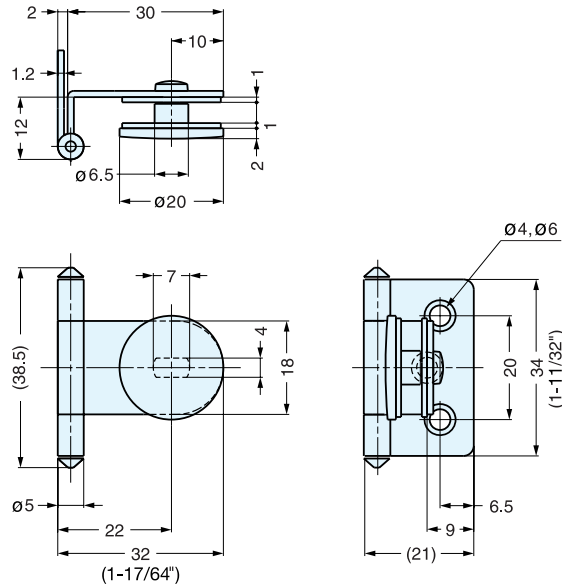
No.	Part Name	Material	Finish
①	Body	304 Stainless Steel	Plain
②	Arm		
③	Hinge Pin		
④	Plate	Aluminum	Anodized
⑤	Washer	PVC	Clear
⑥	Screw	304 Stainless Steel	Plain

Item No.	Weight (g)	Box (pcs)	Carton (pcs)
GH-34/0/S	15	150	900

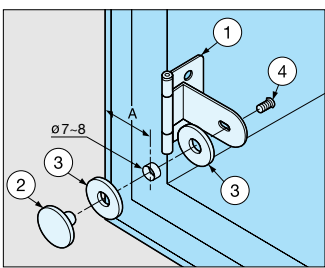
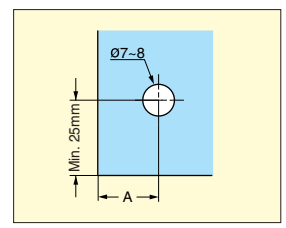
# INSET GLASS DOOR HINGE



# GH-34/0



- Hinge for glass/acrylic doors.
- Door thickness: 4-6 mm
- Door size: Max. W450 x H700 (W17-3/4" x H27-9/16")
- Door weight: Max. 4 kg/pair (8.8 lbs/pair)



Installation

Glass Thickness (mm)	A (mm)
4 ( 5/32" )	19
5 ( 3/16" )	18
6 ( 15/64" )	17

No.	Part Name	Material	Finish
①	Body	Steel	Chrome
②	Plate	Brass	
③	Washer	PVC	Clear
④	Screw	Steel	Nickel

Item No.	Weight (g)	Box (pcs)	Carton (pcs)
GH-34/0/CR	23.5	150	900