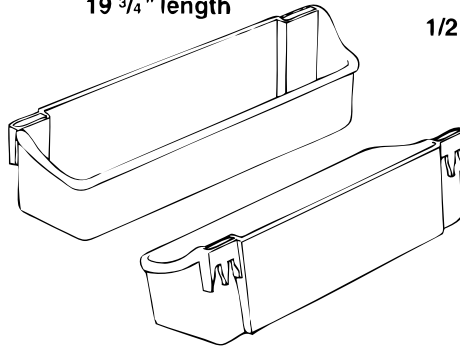


## Installation Instructions for DOOR STORAGE UTILITY TRAYS

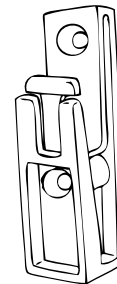
**TOOLS REQUIRED: (Screw-In Clip Installation only)**  
 Soft lead pencil (for marking screw locations),  
 Drill with a 3/32" diameter drill bit  
 #2 Phillips screwdriver  
 Any kind of tape and a tape measure or level may be desired.

### DOOR STORAGE UTILITY TRAYS

**SIZES:** 7 7/8" length  
 13 1/2" length  
 19 3/4" length

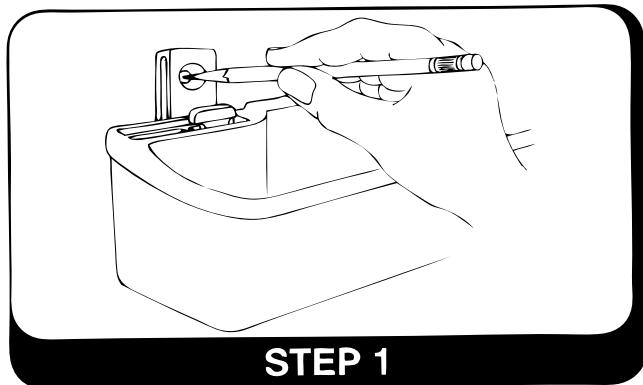


1/2" x #6 SCREWS



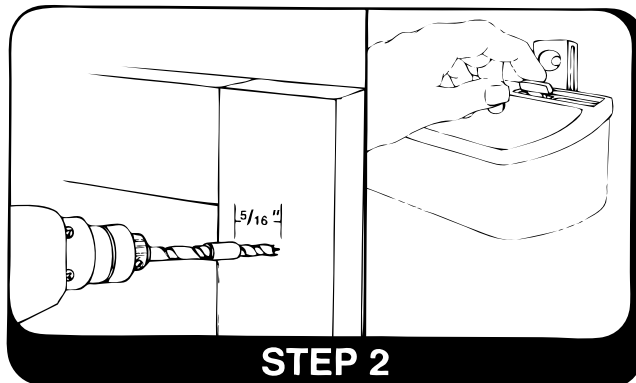
**NOTE:** Two slots are provided at each end of tray to allow for varied surface locations.

SCREW-IN CLIP



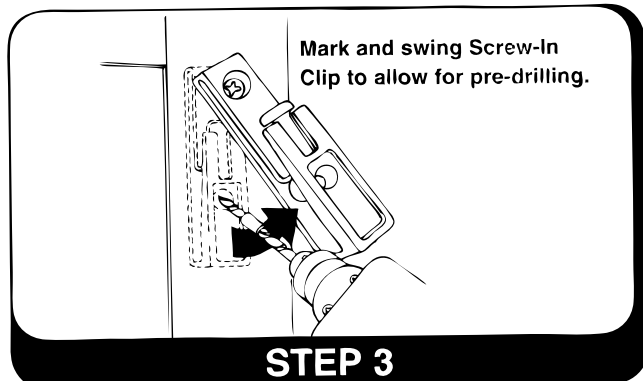
**STEP 1**

**Screw-In Clip Installation** - Snap one clip into the slot at each end of the tray. Hold the shelf in place and mark the screw locations using the upper holes in each clip. **Note:** Before marking the screw locations, you may want to use a level or tape measure to insure that the tray is straight.



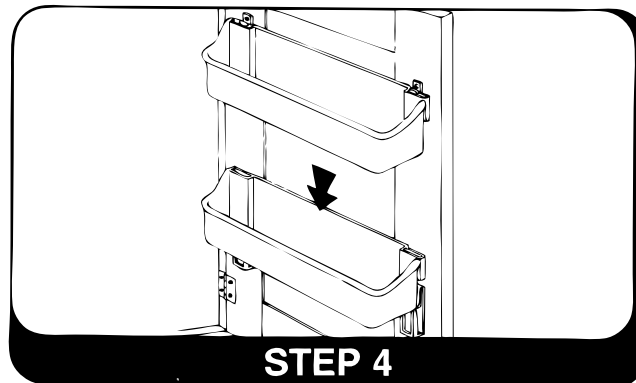
**STEP 2**

Remove the clips from the tray by disengaging spring hook as shown. Using 3/32" drill bit, prepare to drill pilot holes at locations marked in steps 1 & 3. Wrap tape 5/16" from tip of drill bit as shown. Drill two holes at locations marked in step 1 (do not drill deeper than front edge of tape). Mount clips at top holes using two (2) 1/2" x #6 screws (do not fasten securely).



**STEP 3**

With clips in vertical position, mark bottom hole locations (swing clip to allow for drilling) and drill remaining pilot holes. Reposition the clips and securely mount top and bottom of each clip using two (2) 1/2" x #6 screws. **NOTE:** Use plastic screw anchors or #6-32 toggle bolts (not included) when installing screw-in clips on wallboard, plaster or very thin material.



**STEP 4**

Position the tray on the clips and gently press downward to engage spring lock. This completes the installation of your door storage utility tray. To install second door storage utility tray simple repeat steps 1-4.

# INSTALLATION INSTRUCTIONS for POLYMER DOOR STORAGE SHELF SYSTEMS

## SHELF SIZE SELECTION

Select the best size RAS Door Storage shelf for the application from the CHART below.

Minimum Cabinet Frame Opening - Inches	Rev-A-Shelf Width-Inches
8 3/8"	7 7/8"
14 1/4"	13 3/4"
20 1/4"	19 3/4"

**NOTE:** The cabinet opening should be at least 1/2" wider than each shelf size to ensure adequate side clearance.

## SHELF STANDARD LENGTH SELECTION

Select the longest shelf standard length that will fit on the cabinet door and still provide clearance inside the cabinet face frame opening. This will allow for strongest mounting and greatest flexibility in determining the number of shelves and shelf position. Standards can be trimmed if required.

### FOR SHELF STANDARD LENGTHS AVAILABLE REFER TO CHART A

#### CHART A

Nominal Standard Length	Actual Standard Length	Minimum Vertical Cabinet Opening
6232-26-4528-52	25 7/8"	26 1/8"
6232-58-4528-52	57 7/8"	58 1/8"

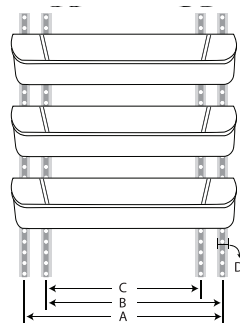
Mount the shelf standards on the cabinet door using the spacing dimensions from CHART B. Drill holes 7/16" maximum depth.

#### CHART B

Spacing dimensions for shelf standards.  
SELECT SPACING A, B, C, D, AS NEEDED.

#### CHART B

Shelf Width (Inches)	A	B	C	D
7 7/8"	7"	6 3/16"	5 3/8"	13/16"
13 3/4"	12 7/8"	12 1/16"	11 1/4"	13/16"
19 3/4"	18 7/8"	18 1/4"	17 1/4"	13/16"

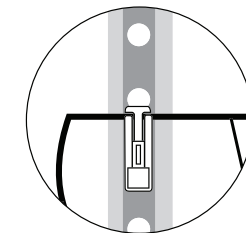
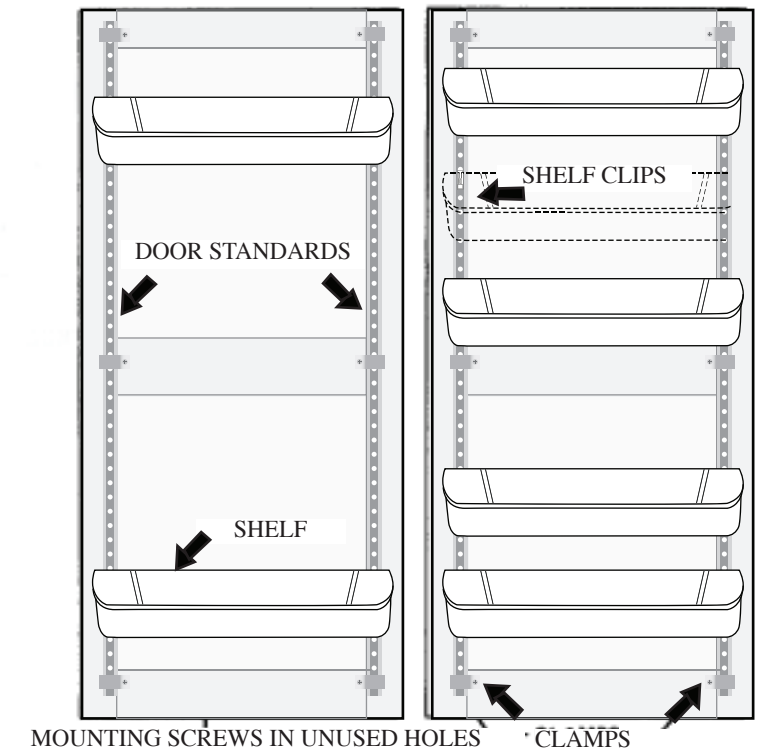


**NOTE:** If the shelf standards are to be mounted on the top and bottom of the door frames (panel door) the standard should be long enough to extend 3/4" onto these frame members to accept a screw.

## MOUNTING THE SHELF STANDARDS:

- Determine the spacing of the standards by inserting clips at the top and bottom on a pair of standards and placing the shelves into the appropriate pocket. (Any combination of pockets on the back of the door shelf may be used to provide spacing combinations which are the most appropriate for your door style).
- Mark the mounting screw positions by placing the assembly made in (Step no. 1) above, in the desired position. Insure that the shelves are level before installing the mounting screws. CAUTION: If pre-drilling holes do not exceed 7/16" deep to insure that screws will not break through or otherwise mar the outer surface of the door or installed unit. (use 7/64" dia. drill for hardwood and 3/32" dia. drill for softwood).
- Additional clamps are furnished which can be used for door frame strain relief as noted. They also allow re-positioning mounting screws either "outside" or "inside" the shelf standards (whichever provides the most wood screw).

Two shelf clips are required to support each shelf. These may be positioned as desired using various combinations of pockets in the shelf standards.  
**NOTE:**  
**SHELF STANDARDS MAY BE CUT TO SHORTER LENGTHS BY USING A FINE BLADE HACKSAW.**



ENLARGED VIEW OF SHELF CLIP IN POSITION

## INSTALLING THE SHELF CLIPS AND DOOR SHELVES:

- Insert the shelf clip crosswise in the shelf standard, with the boss on the clip in the selected hole, and rotate 1/4 turn until the clip snaps into a vertical position. To remove or relocate a clip rotate it to a horizontal position and remove.
- To install the door shelf on the clips hook the pockets in the back of the shelf over the two clips and press down on the rear of the shelf until it locks on the clips. The shelves are now ready for loading.
- To remove or relocate a shelf release the shelf from the clips by pulling the two clip levers forward (toward the shelf front). Lift the shelf up and off the clips.
- Reposition the two shelf clips as described in (Step no. 1) above, and reinstall the door shelf.

