




Miller Dowels

Miller Dowel joinery is a simple and revolutionary two-part system consisting of an engineered, stepped, hardwood dowel, and a matching stepped drill bit. Joints created with Miller Dowels combine the advantages of natural wood joinery with the ease of nails or screws.

- Simple - fast and easy to use
- Strong - solid, longer lasting joints
- Economical - minimal tools required
- Versatile - use in any woodworking project
- Unique - the only natural fastener designed for insertion from the outside
- Excellent results - an appealing and durable alternative to metal fastener

A 
Mini X: 1½" long
¼" dia. cap

B 
1X: 2¾" long
⅜" dia. cap

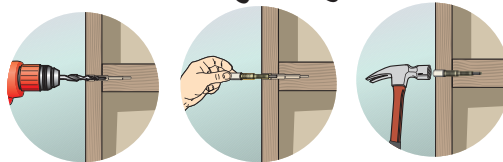
C 
2X: 3½" long
½" dia. cap



Drill Bit



***Superior fasteners for
solid wood joinery.***



A Mini X Dowels

MD8C6.5 B Birch
MD8C6.5 C Cherry
MD8C6.5 O Oak
MD8C6.5 W Walnut

B 1X Dowels

MD12D11 B Birch
MD12D11 C Cherry
MD12D11 W Walnut

2X Dowels

C MD15D14 B Birch
MD15D14 C Cherry
MD15D14 O Oak
MD15D14 W Walnut

Drill Bits

MDQD8C6.5 Mini X drill bit
MDQD12D11 1X drill bit