

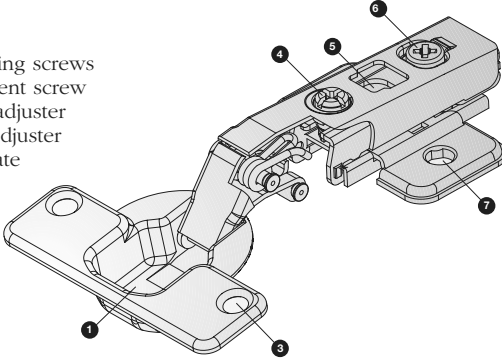
# LAMA Intro to Lama ST Clip Concealed Hinges

Volume Pricing Available

- Quick, easy and precise cam depth adjustment
- Self-closing
- For frameless and face frame applications
- 35mm drilling diameter for hinge cup

## Concealed Hinge

- 1) Hinge cup
- 2) Hinge arm
- 3) Holes for fixing screws
- 4) Side adjustment screw
- 5) Height cam adjuster
- 6) Depth cam adjuster
- 7) Mounting plate



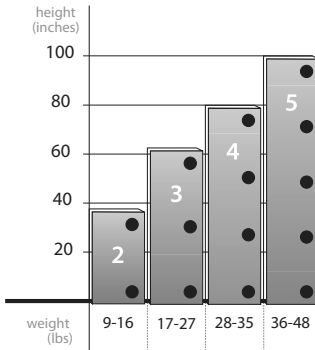
## Hinge Options

Opening	Arm Type	*Overlay	**1/2 Overlay	***Inset
110°	Straight Arm	yes		
110°	1/2 Cranked		yes	
125°	Straight Arm	yes		
170°	Straight Arm	yes		

- \* Overlay 1/2" to 3/4"
- \*\* 1/2 Overlay 3/16" to 5/16"
- \*\*\* Inset not available

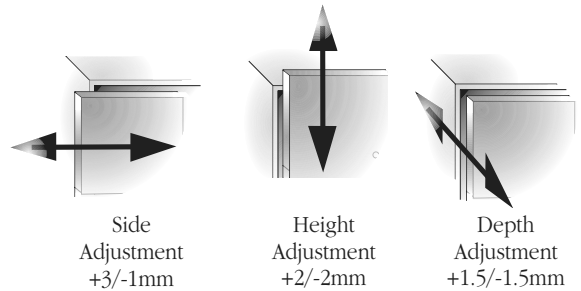
Note: Overlay applications are dependant on hinge arm, plate height and boring distance combinations.

## Hinges Per Door



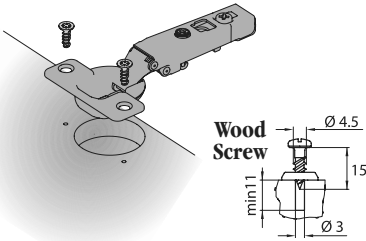
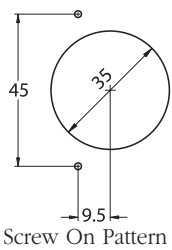
Recommended number of hinges per door.

## Adjustment

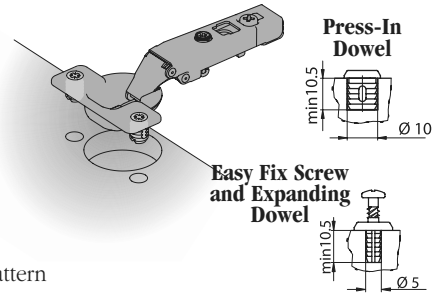
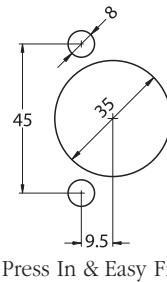


## Mounting Options

### Screw On

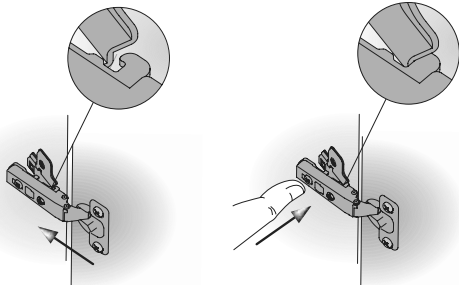


### Press In & Easy Fix



## Hinge Attachment to Plate

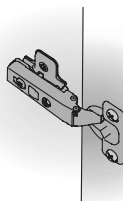
### Assembly



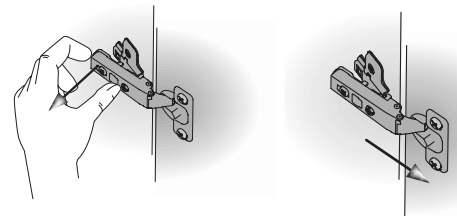
Slide two hooks under hinge arm into the mounting plate.

Press on the rear part of hinge arm until you hear a click.

### Attached



### Disassembly



Press button on rear of hinge arm.

Lift off door.