

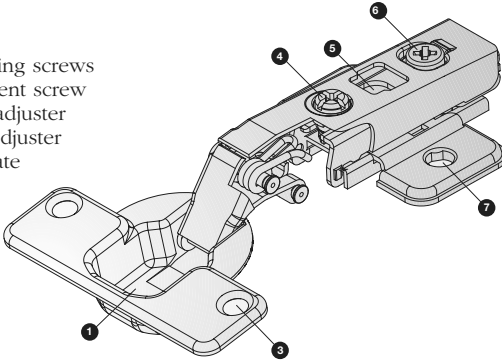
LAMA Intro to Lama ST Clip Concealed Hinges

Volume Pricing Available

- Quick, easy and precise cam depth adjustment
- Self-closing
- For frameless and face frame applications
- 35mm drilling diameter for hinge cup

Concealed Hinge

- 1) Hinge cup
- 2) Hinge arm
- 3) Holes for fixing screws
- 4) Side adjustment screw
- 5) Height cam adjuster
- 6) Depth cam adjuster
- 7) Mounting plate



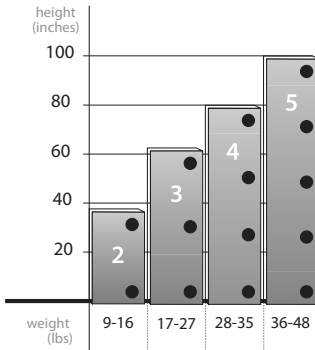
Hinge Options

Opening	Arm Type	*Overlay	**1/2 Overlay	***Inset
110°	Straight Arm	yes		
110°	1/2 Cranked		yes	
125°	Straight Arm	yes		
170°	Straight Arm	yes		

- * Overlay 1/2" to 3/4"
- ** 1/2 Overlay 3/16" to 5/16"
- *** Inset not available

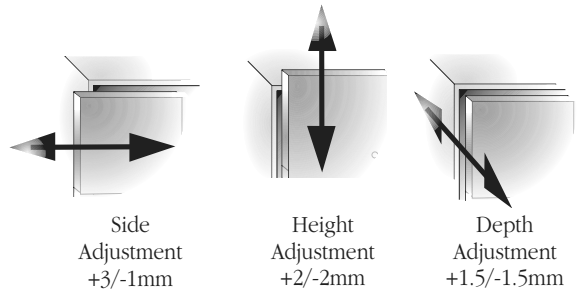
Note: Overlay applications are dependant on hinge arm, plate height and boring distance combinations.

Hinges Per Door



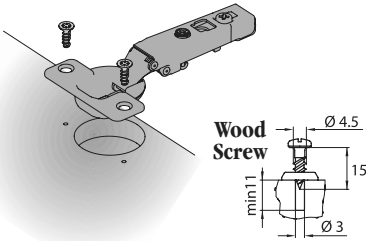
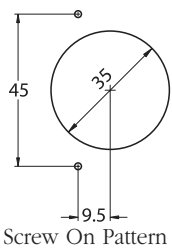
Recommended number of hinges per door.

Adjustment

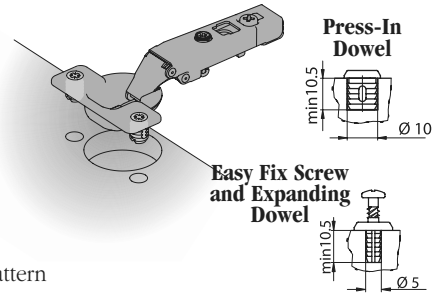
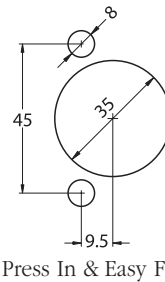


Mounting Options

Screw On

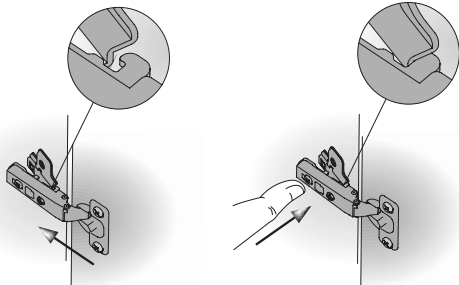


Press In & Easy Fix



Hinge Attachment to Plate

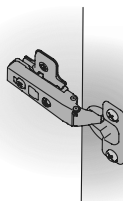
Assembly



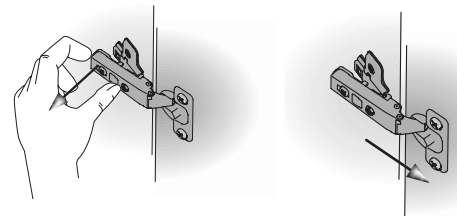
Slide two hooks under hinge arm into the mounting plate.

Press on the rear part of hinge arm until you hear a click.

Attached



Disassembly



Press button on rear of hinge arm.

Lift off door.