

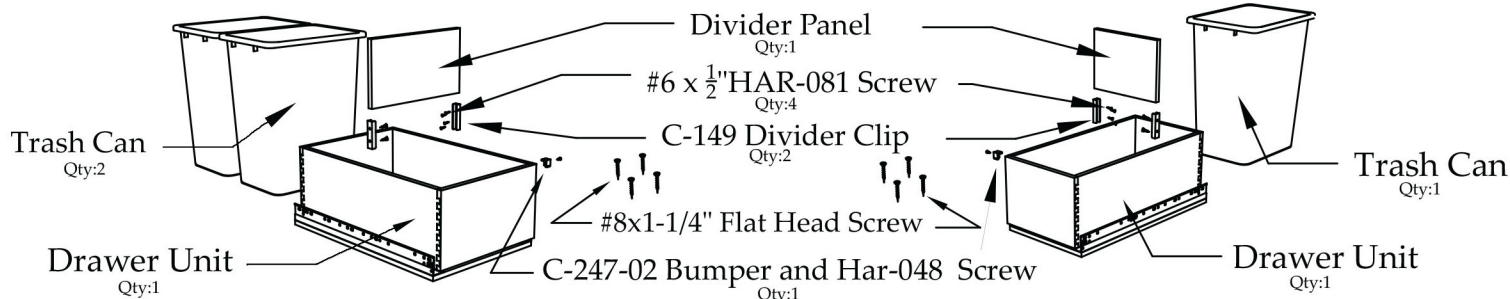
QuikTRAY™ STORAGE SOLUTIONS

Bottom Mount Double Trash Can Kit

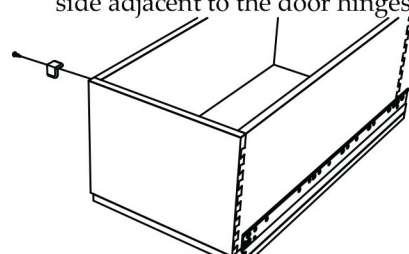
QT-120181 for 18" or greater base cabinet

Bottom Mount Single Trash Can Kit

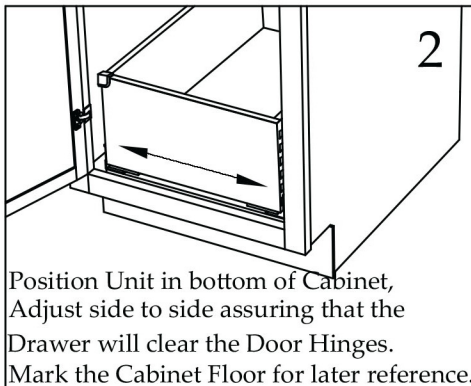
QT-120151 for 15" or greater base cabinet



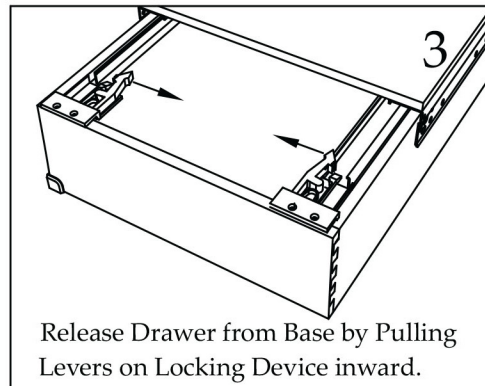
1
Attach C-274-02 Bumper to front side of Drawer with a HAR-048 #6 x 1/2" Screw.
Note: This should be attached to the side adjacent to the door hinges.



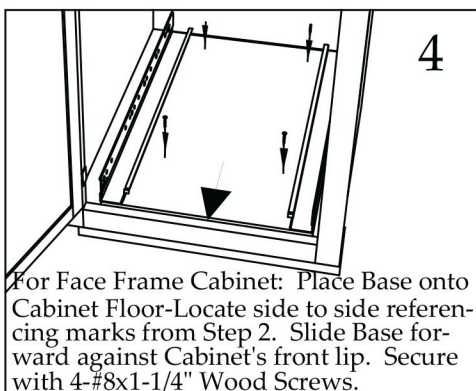
2
Position Unit in bottom of Cabinet, Adjust side to side assuring that the Drawer will clear the Door Hinges. Mark the Cabinet Floor for later reference.



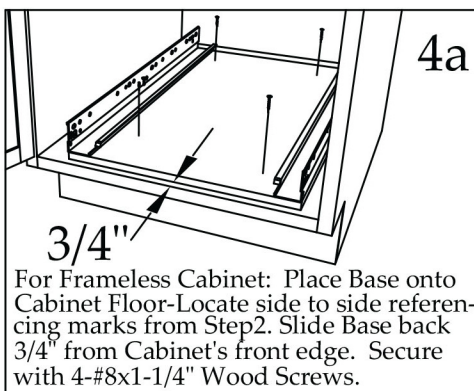
3
Release Drawer from Base by Pulling Levers on Locking Device inward.



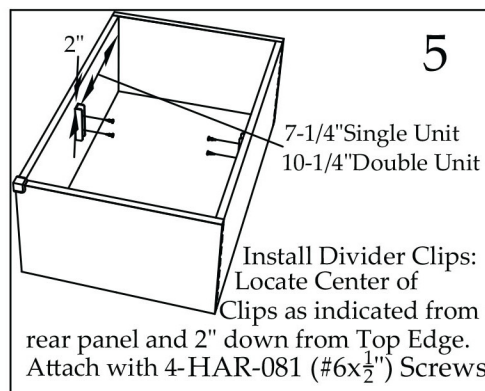
4
For Face Frame Cabinet: Place Base onto Cabinet Floor-Locate side to side referencing marks from Step 2. Slide Base forward against Cabinet's front lip. Secure with 4-#8x1-1/4" Wood Screws.



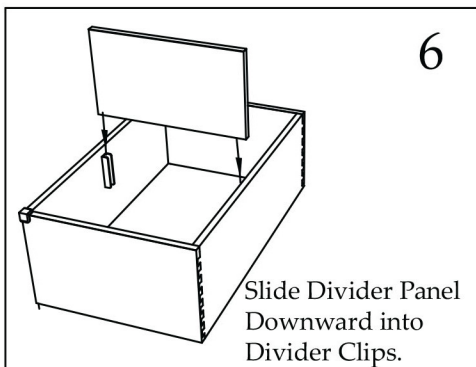
4a
For Frameless Cabinet: Place Base onto Cabinet Floor-Locate side to side referencing marks from Step 2. Slide Base back 3/4" from Cabinet's front edge. Secure with 4-#8x1-1/4" Wood Screws.



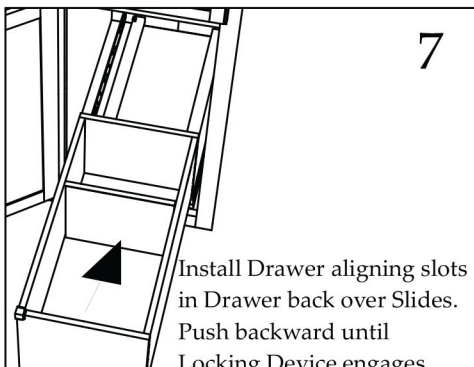
5
7-1/4" Single Unit
10-1/4" Double Unit
Install Divider Clips: Locate Center of Clips as indicated from rear panel and 2" down from Top Edge. Attach with 4-HAR-081 (#6x1/2") Screws



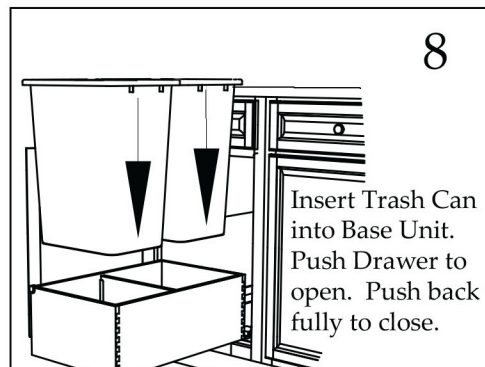
6
Slide Divider Panel Downward into Divider Clips.



7
Install Drawer aligning slots in Drawer back over Slides. Push backward until Locking Device engages.



8
Insert Trash Can into Base Unit. Push Drawer to open. Push back fully to close.



TENN-TEX
PLASTICS INC.

www.quiktray.com
www.tenntex.com



Made in USA

For additional installation questions, call 1-800-TENNTEX

INS-QT04