

ETS/ETST Series

External Through-Bolt Mounting Plates for Olympus Cabinet Locks



ETS Through-Bolt Mounting Plate

- External metal 1/8" or 1/4" through-bolt mounting plate allows for an attractive flush mounting of the cabinet lock face
- Increases security of installation through reinforcement of cabinet face and direct connection of lock mounting screws to through-bolt mounting plate's binder posts
- Available in US3 and US26D finishes
- Includes mounting screws

ETST Template for Through-Bolt Mounting Plate

- Allows for proper mounting hole placement of through-bolt mounting plate
- Can be used as a 1/8" shim spacer
- Available in US3 and US26D finishes

For Olympus locks 700, 721, 754, 777, 800, 850, 854, 888, 931, 950

- ETS1-125 - 1/8" trim spacer
- ETS1-250 - 1/4" trim spacer
- ETS1-PL - Cabinet pull
- ETST1 - Trim spacer template

For Olympus locks 777, 888

- ETS4 - Trim spacer for 777
- ETS5 - Trim spacer for 888
- ETST1 - Trim spacer template

For Olympus locks 100, 200, 500, 600

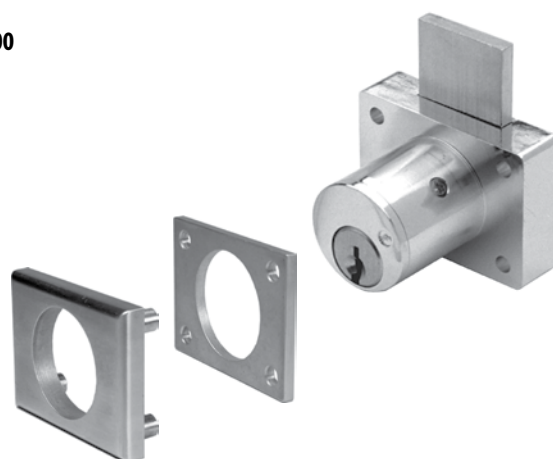
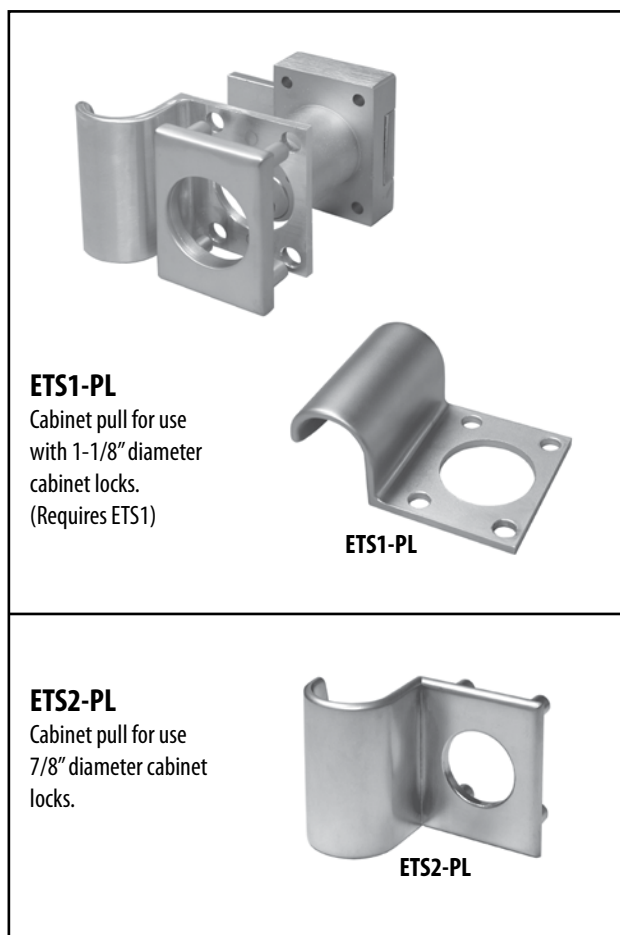
- ETS2-125 - 1/8" trim spacer
- ETS2-250 - 1/4" trim spacer
- ETS2-PL - Cabinet pull
- ETST2 - Trim spacer template

For Olympus locks N078, R078

- ETS3 - Trim spacer
- ETST3 - Trim spacer template

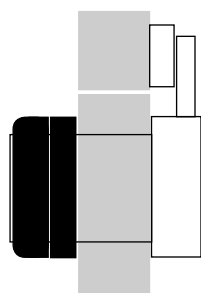
For Olympus locks 999, 998, 997, 996

- ETS6 - Trim spacer
- ETST6 - Trim spacer template

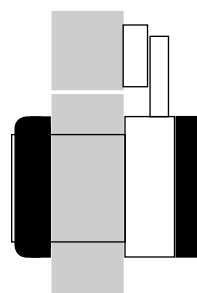


External Through-Bolt Plate & Template

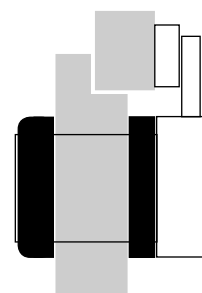
Below illustrations do not represent all possible configurations.



Flush mount
with spacer and
template on front of
cabinet



Flush mount
with spacer in front and
template behind



Partial overlay with spacer
in front and template
between cabinet and back
of lock