

SCALE: None

MATERIAL: TOL: Reference Only

DRAWN: MG APPRVD: DATE: 2/16/2012

NOTES: Position 1 Retracted

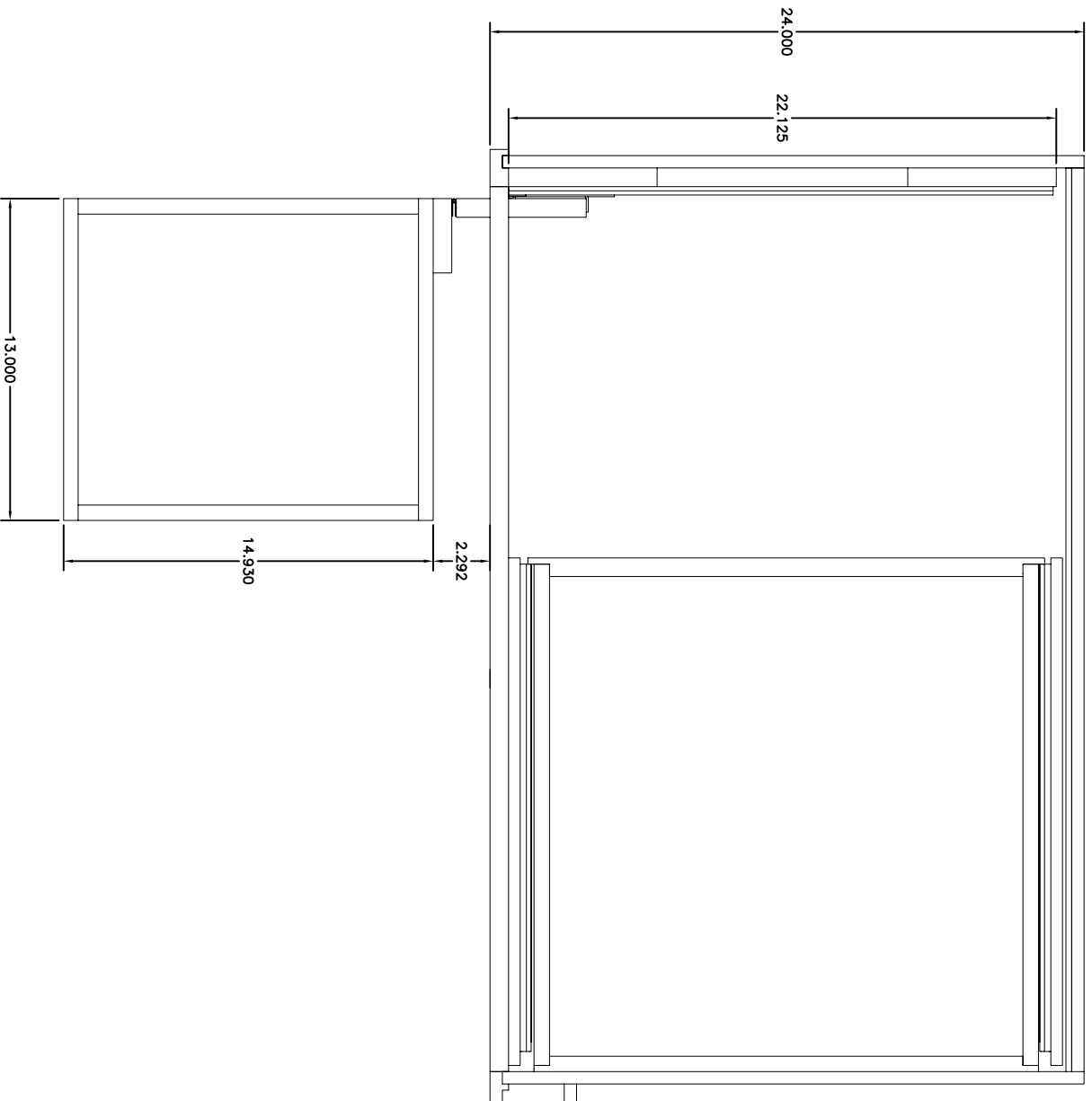
DESC: Blind Corner Caddy Typical Installation PART#: XXXXX----

DWG: P0650 Positions REV: PAGE: 01



1010 Rowe Street • Elkhart, Indiana, USA 46516-5589  
Phone (574)295-5353 • Fax (574)295-5329  
www.omeganationalproducts.com

THIS MATERIAL IS THE CONFIDENTIAL PROPERTY OF OMEGA NATIONAL PRODUCTS, LLC AND CONTAINS VALUABLE INFORMATION AND DATA THAT MAY NOT BE DUPLICATED, DISCLOSED OR GIVEN IN ANY FORM TO ANYONE WITHOUT PRIOR WRITTEN AUTHORIZATION FROM AN OFFICER OF THE COMPANY. THE INFORMATION AND DATA CONTAINED IN THIS MATERIAL COMPRISE TRADE SECRETS AND ARE PROTECTED UNDER FEDERAL AND STATE LAWS THAT PROVIDE FOR CIVIL AND CRIMINAL PENALTIES. IF YOU HAVE RECEIVED THIS MATERIAL UNINTENTIONALLY, PLEASE TREAT IT AS CONFIDENTIAL AND NOTIFY OMEGA NATIONAL PRODUCTS, LLC IMMEDIATELY BY CALLING 574-295-5353.



SCALE: None

MATERIAL:

TOL: Reference Only

DRAWN: MC

APPRVD:

DATE: 2/16/2012

NOTES: Position 2 Extended

DESC: Blind Corner Caddy Typical Installation

PART#: XXXXX----

DWG: P0650 Positions

REV:

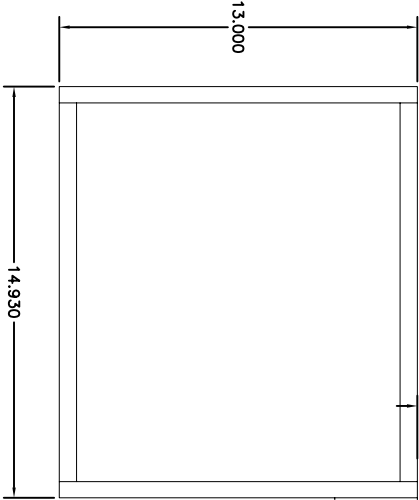
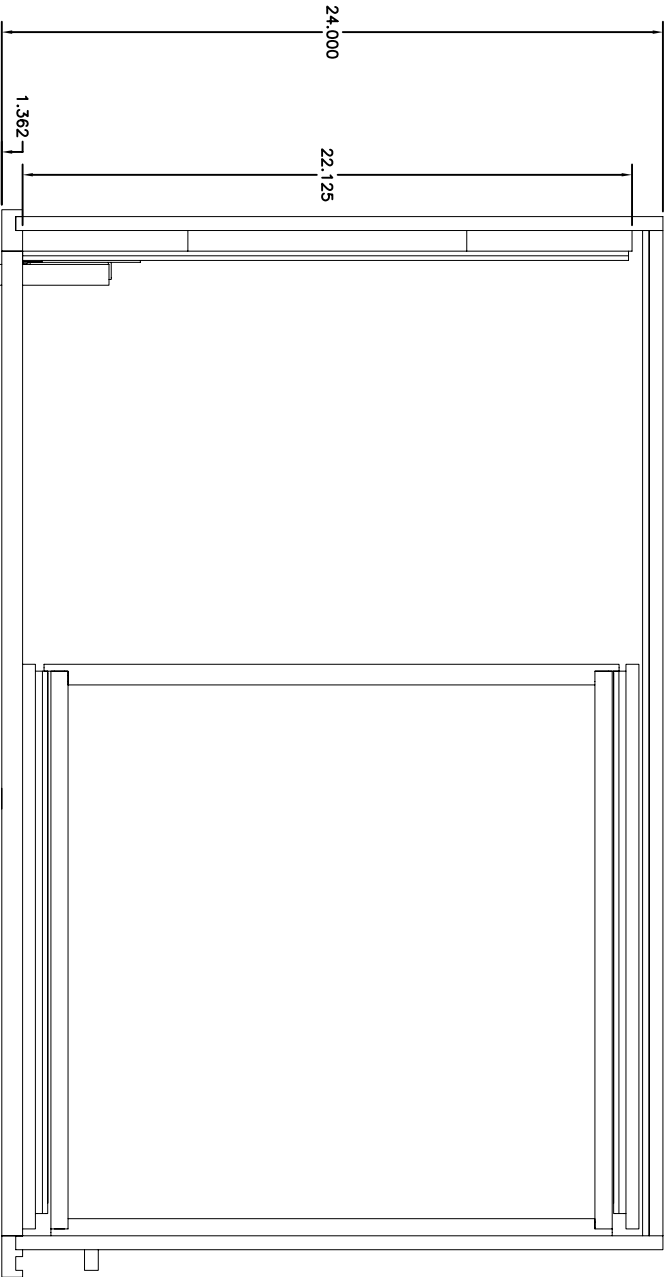
PAGE: 01



Omega National

P R O D U C T S

1010 Rowe Street • Elkhart, Indiana, USA 46516-5589  
Phone (574)295-5353 • Fax (574)295-5329  
www.omeganationalproducts.com



Omega National

P R O D U C T S

1010 Rowe Street • Elkhart, Indiana, USA 46516-5589  
Phone (574)295-5353 • Fax (574)295-5329  
www.omeganationalproducts.com

SCALE: None

THIS MATERIAL IS THE CONFIDENTIAL PROPERTY OF OMEGA NATIONAL PRODUCTS, LLC AND CONTAINS VALUABLE INFORMATION AND DATA THAT MAY NOT BE DUPLICATED, DISCLOSED OR GIVEN IN ANY FORM TO ANYONE WITHOUT PRIOR WRITTEN AUTHORIZATION FROM AN OFFICER OF THE COMPANY. THE INFORMATION AND DATA CONTAINED IN THIS MATERIAL COMPRISE TRADE SECRETS AND ARE PROTECTED UNDER FEDERAL AND STATE LAWS THAT PROVIDE FOR CIVIL AND CRIMINAL PENALTIES. IF YOU HAVE RECEIVED THIS MATERIAL UNINTENTIONALLY, PLEASE TREAT IT AS CONFIDENTIAL AND NOTIFY OMEGA NATIONAL PRODUCTS, LLC IMMEDIATELY BY CALLING 574-295-5353.

MATERIAL:

TOL: Reference Only

DRAWN: MG

APPRVD:

DATE: 2/16/2012

NOTES:

Position 3 Extended and Rotated

DESC:

Blind Corner Caddy Typical Installation

PART#: XXXXX----

DWG:

P0650 Positions

REV:

PAGE: 01