

Hinges



BLUMOTION 971A for COMPACT Hinges

BLUMOTION 971A poly-bag set



Can be used for all COMPACT hinges

Set includes:

- BLUMOTION mechanism (971A9700)
- Spacer (971A9709)
- #8 x 1-1/4" type 17 wood screw
- #8 x 2" type 17 wood screw

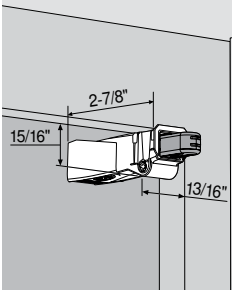
Part no.

Poly-bag set

971A9700.22

Full overlay

- Full overlay – 1" or greater overlay

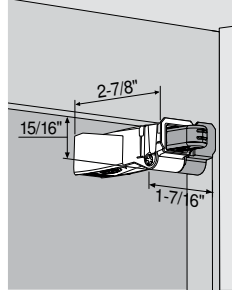


Part no.

BLUMOTION	971A9700
Installation screw (1-1/4")	8114Z

Partial overlay

- Partial overlay – less than 1" overlay



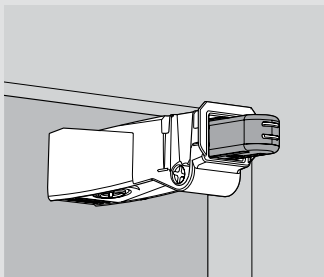
Part no.

BLUMOTION	971A9700
Spacer	971A9709
Installation screw (2")	8200Z

Specifications

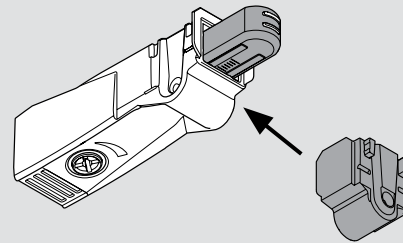
Mounting

BLUMOTION for doors mounts anywhere on the hinge-side stile of the cabinet using a 1-1/4" screw or 2" screw when using spacer.



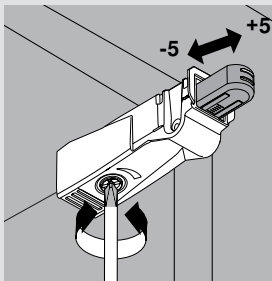
Attachment of partial overlay spacer

The partial overlay spacer snaps onto the side of the BLUMOTION for easier mounting.



Adjustment

Use a Phillips or POZI screwdriver to adjust the contact point in or out (± 5 mm). Adjust out for larger, heavier doors or in for smaller, lighter doors.



BLUMOTION per door

For optimum BLUMOTION effect, one BLUMOTION 971A should be installed for most applications.

Tall or heavy doors may require an additional BLUMOTION 971A. Trial application recommended.

- BLUMOTION 973A
- Hinges

