

# CLIP top 95° thick door hinges



## Features

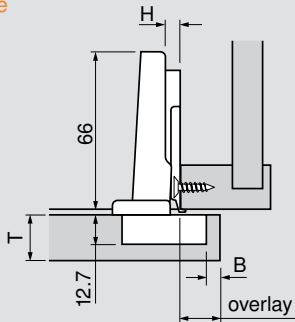
- Three-dimensional adjustment
- Available with INSERTA attachment
- For door thicknesses up to 30 (1-3/16")
- All metal hinge, nickel-plated
- Add-on BLUMOTION soft close available

Minimum reveal table							
3	0.4	0.8	1.0	1.5	1.9	2.8	3.6
4	0.4	0.7	1.0	1.4	1.8	2.5	3.1
5	0.4	0.7	1.0	1.4	1.8	2.3	2.7
6	0.4	0.7	1.0	1.4	1.8	2.2	2.5
7	0.4	0.7	0.9	1.4	1.7	2.1	2.4
B = boring distance	19	22	24	26	28	29	30
T = door thickness							

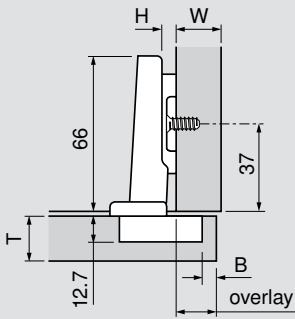
For thickness greater than 30 trial app. recommended

## Overlay

### Frame

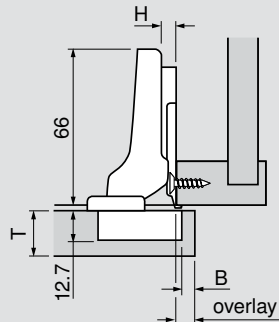


### Panel

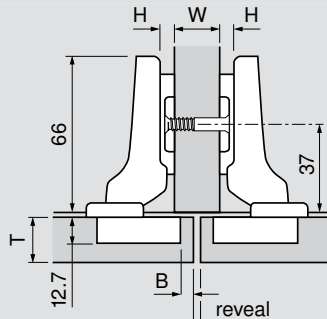


## Partial/twin overlay

### Frame

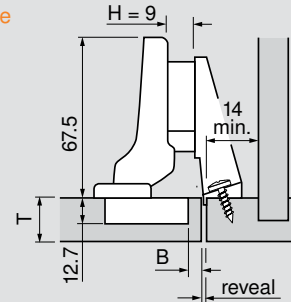


### Panel



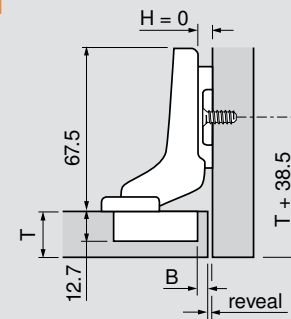
## Inset

### Frame



**NOTE:** Use a half-cranked hinge and mounting plate 175H5030.21 for this application

### Panel



H	Overlay					P	S
0	14	15	16	17	18	14.5	22
3	11	12	13	14	15	17.5	25
4.5	9.5	10.5	11.5	12.5	13.5	19	26.5
6	8	9	10	11	12	20.5	28
9	5	6	7	8	9	23.5	31
	3	4	5	6	7	fixed distance = 11	
	B = boring distance						

**NOTE:** 4.5 plate is only for use in frame cabinets, 9 plate is only for panel cabinets

H	Overlay					P	S
0	4.5	5.5	6.5	7.5	8.5	24	31
	3	4	5	6	7	fixed distance = 1.5	
	B = boring distance						

H	Reveal					W	P	S
	7	5	3	1	-	16		
0	10	8	6	4	2	19	24	31
	13	11	9	7	5	22		
	3	4	5	6	7	B = boring distance		
	B = boring distance							

H	Reveal					P	S
0	4	3	2	1	-	32.5	40
9	4.5	3.5	2.5	1.5	0.5	33	40.5
	3	4	5	6	7	fixed distance: 0 = -7 9 = 1.5	
	B = boring distance						

## Abbreviations

H	=	Plate height
P	=	Door protrusion
S	=	Side arm protrusion
W	=	Side panel width

Straight-arm	Self close	Free swing
Screw-on	71T9550	70T9550.TL
Press-in	71T9580	70T9580.TL
INSERTA	71T9590B	

Half-cranked	Self close	Free swing
Screw-on	71T9650	70T9650.TL
Press-in	71T9680	
INSERTA	71T9690B	

Full-cranked	Self close	Free swing
Screw-on	71T9750	70T9750.TL
Press-in	71T9780	
INSERTA	71T9790B	