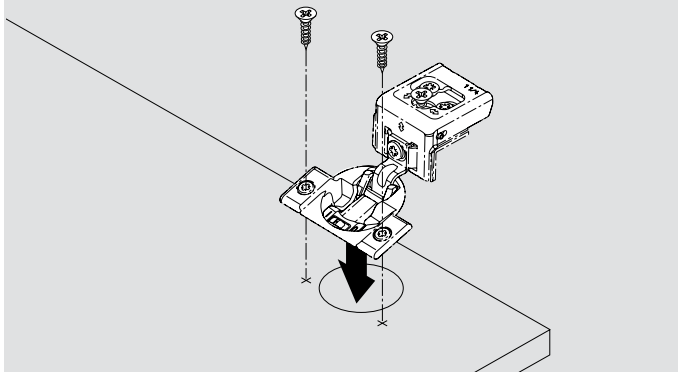


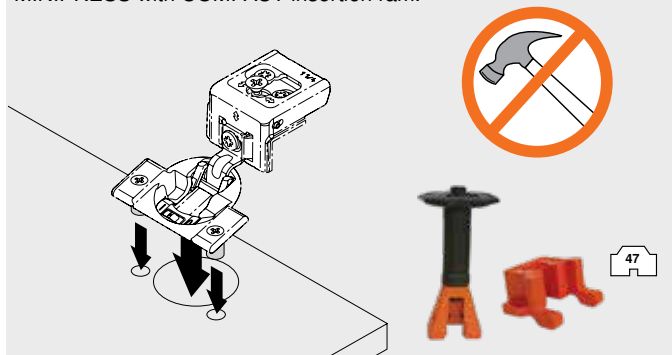
Screw-on

Use #6 wood screws.



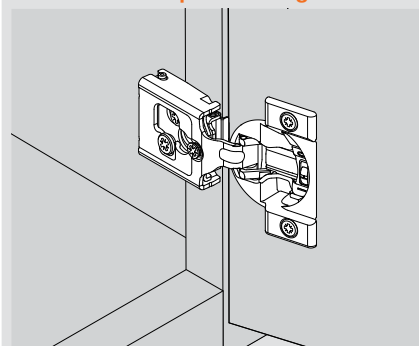
Press-in

Pre-attached Ø8 dowels installed with Blum press-in tool or MINIPRESS with COMPACT insertion ram.

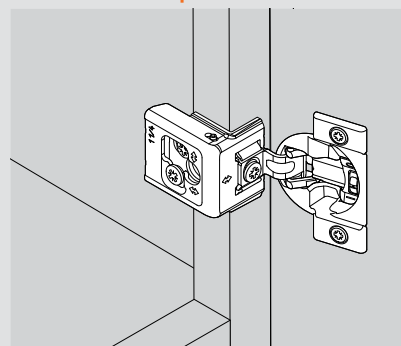


Mounting plate attachment

30C series – wraparound/edge mount



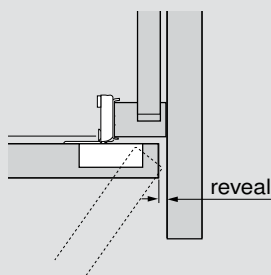
31C series – wraparound



Minimum reveal

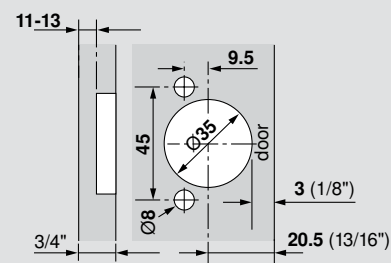
A minimum reveal per door is required to keep the door from binding and varies depending on door thickness.

See minimum reveal table for each hinge.



Hinge cup centerpoint

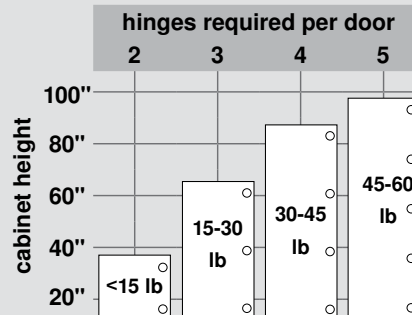
Hinge cup centerpoint and MINIPRESS setback position is 20.5 (13/16") for COMPACT CLIP hinges.



NOTE: Maximum door thickness 3/4"

Hinges per door

This chart can serve as a guide for determining the number of hinges per door. Note that door weight can also determine the number of hinges required.



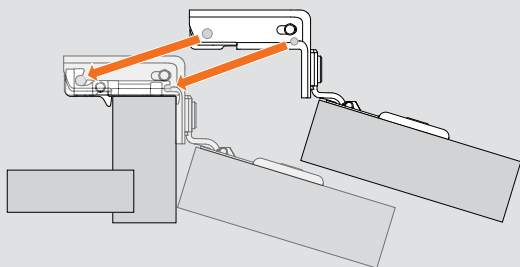
NOTE: The distance between the top and bottom hinges must be greater than the width of the door

Clip features

With COMPACT CLIP, doors can be removed and reattached quickly and tool free. Not only does this save installers time on the jobsite, it also reduces the risk of damage to the cabinet frame.

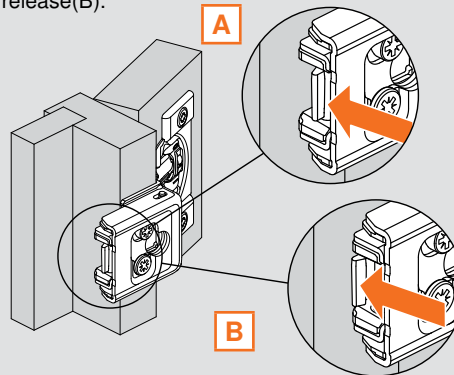
Hinge attachment

Step 1: Slide hinge onto CLIP plate until hinge clips in place.

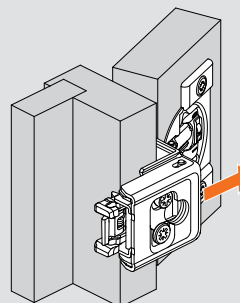


Hinge removal

Step 1: Locate CLIP release lever on back of hinge(A) and press down to release(B).



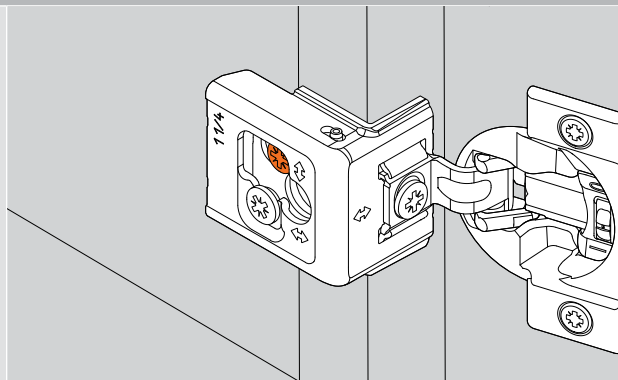
Step 2: While the CLIP lever is released, pull forward on hinge / door to remove from cabinet.



Cam height adjustment

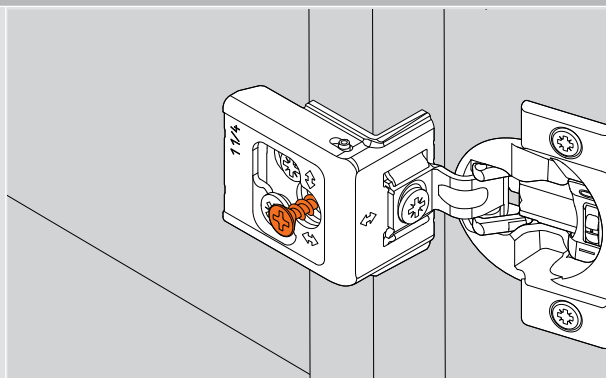
Not only does the height setting remain unchanged as doors are attached and removed, a cam height adjustment is now available. This allows for the maximum adjustment range without needing to be centered in an elongated hole.

All adjustments now have markings stamped on the hinge near their corresponding screw head.



Pre-mounted screw

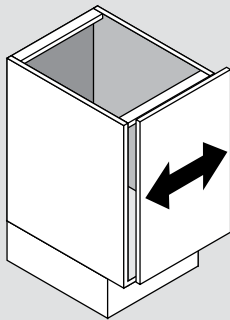
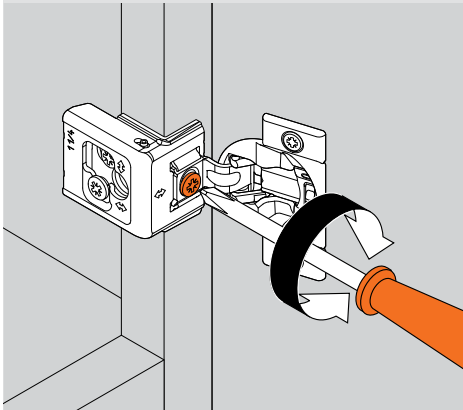
The COMPACT CLIP hinge comes with a pre-mounted screw for quick, easy screw head visibility saving time with improved accuracy.



Three-dimensional cam adjustment

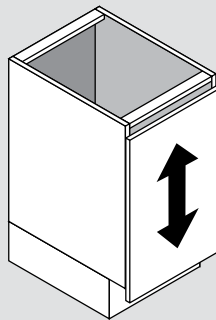
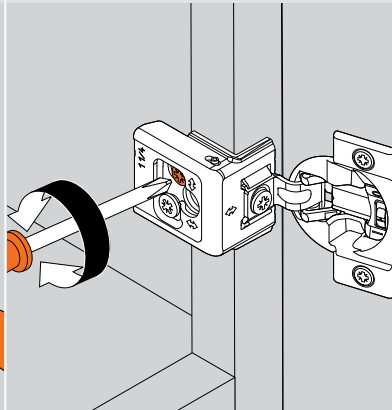
Side adjustment

Rotate the front cam screw to increase or decrease door overlay ($\pm 1/16''$)



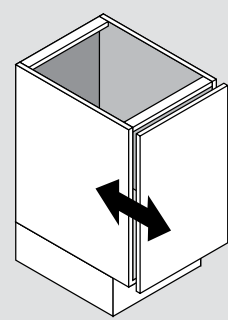
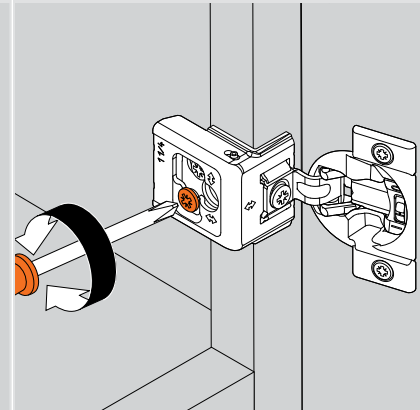
Height adjustment

Rotate this cam screw to increase or decrease the height ($\pm 5/64''$)



Depth adjustment

Rotate this cam screw to adjust door gap ($+ 3/32''$, $- 1/32''$)

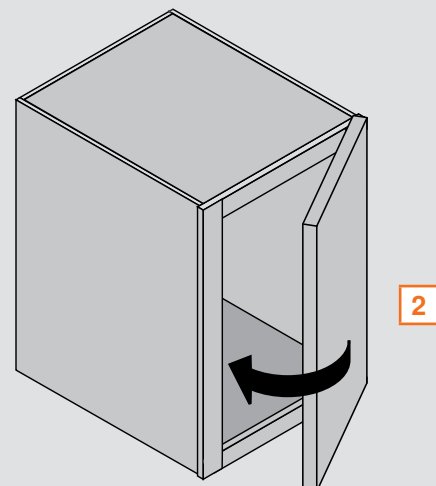
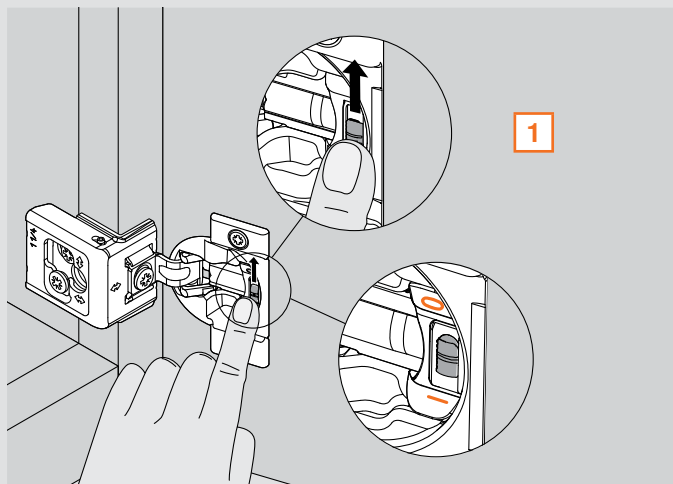


BLUMOTION Deactivation

Deactivation switch on the hinge cup

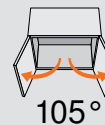
For small or light doors, the BLUMOTION can be deactivated on one of the hinges. COMPACT CLIP comes in the activated position, marked with a "1". The deactivated position is marked with a "0".

The door must be closed once for the deactivation to be complete. To reactivate, move switch back to the original position "1".





COMPACT CLIP 30C2 for Partial Overlay

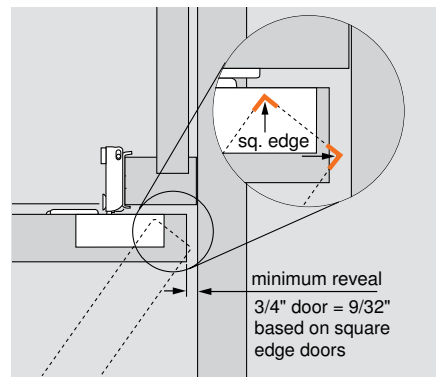


Features

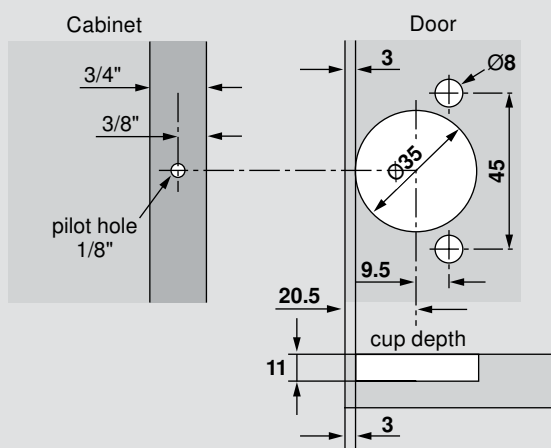
- Utilizes Blum's CLIP technology
- BLUMOTION integrated into the hinge cup
- Deactivation switch for small/light doors
- Overload safety feature
- Three-dimensional cam adjustment with directional arrows for easy and precise adjustability
- 7/16" cup depth
- Edge mount available in 1/2" overlay
- Pre-mounted wood screw for time-saving and precise installation
- Custom logo cover cap available



Minimum Reveal

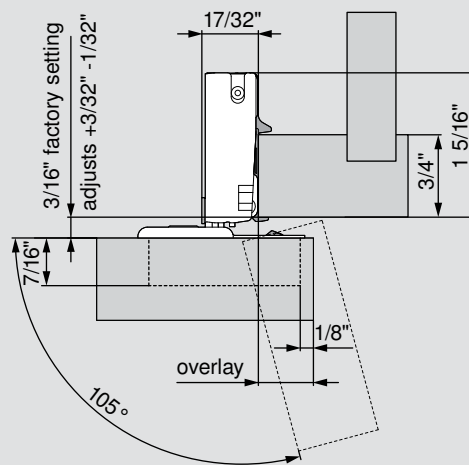


Boring pattern

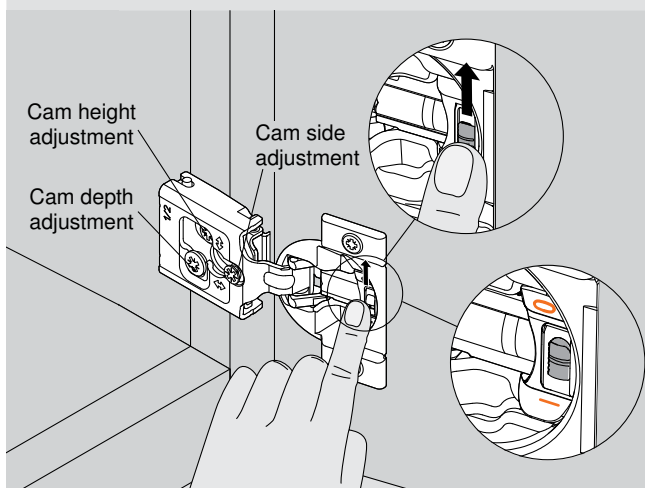


NOTE: Maximum door thickness 3/4"

Dimensions

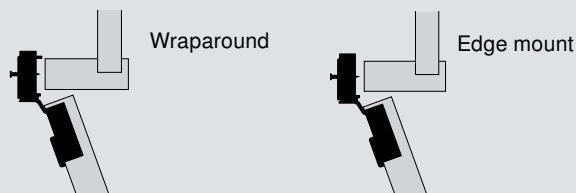


Adjustments



NOTE: COMPACT BLUMOTION comes in the activated position, marked with a "1" – the deactivated position is marked with a "0"

Wraparound and edge mount hinges



Overlay	Door protrusion	Screw-on	Press-in
Wraparound			
5/16"	5/16"		30C258BS05
3/8"	1/4"	30C255BS06	30C258BS06
1/2"	1/8"	30C255BS08	30C258BS08
5/8"	0	30C255BS10	30C258BS10
3/4"	0	30C255BS12	30C258BS12
Edge mount			
1/2"		30C255BSE8	30C258BSE8

Accessories

Angle restriction clip	38C315B3.1
Hinge cup spacer	38C355B9
*Blank cover cap	30C2508

*See page 13 for additional cover cap options